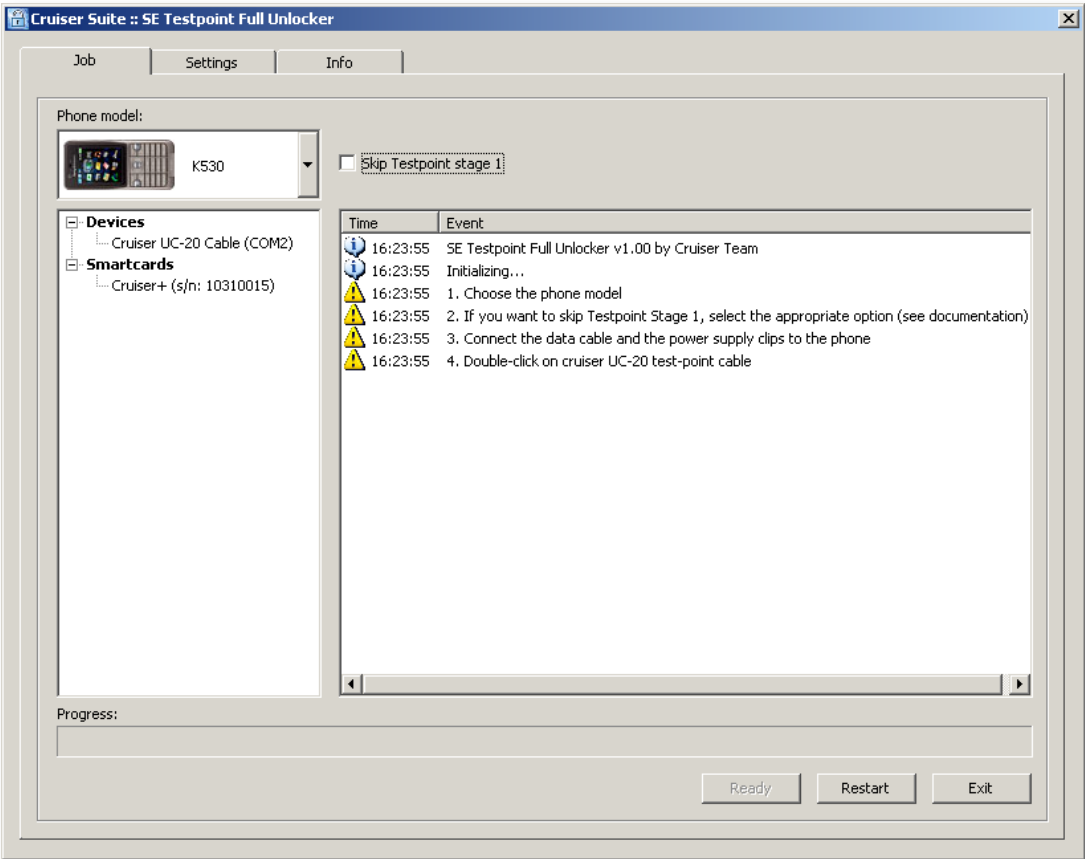
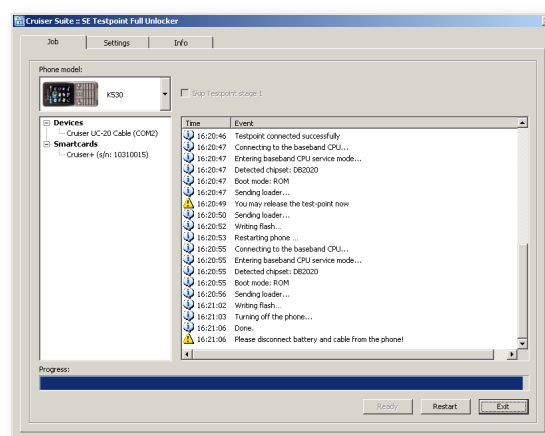
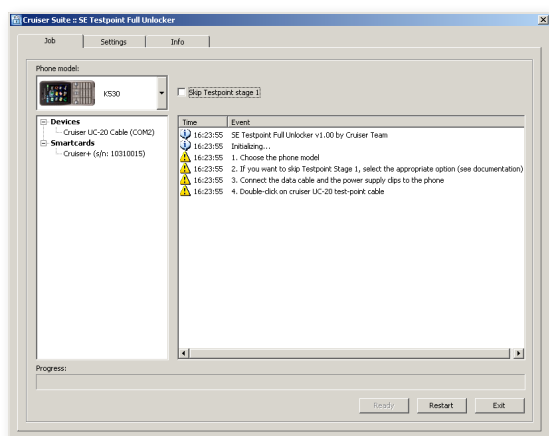


Cruiser Suite SE TestPoint Full Unlocker User's Guide



Contents

Introduction	3
Installation	4
Cable	5
Preparation	6
GDFS reconstruction procedure	7
Unlocking procedure of DB2010	8
Unlocking procedure of DB2012	12
Unlocking procedure of DB2020	16
Appendix - DB2012 Testpoints	19
Appendix - DB2020 Testpoints	20



Introduction

Cruiser Suite SE TestPoint Full Unlocker is an application for **full and permanent unlocking** of SonyEricsson phones. Cruiser Suite SE TestPoint Full Unlocker can also fully repair a damaged security zone. The phone must be previously flashed with a correct firmware.

Currently supported platforms:

- DB2020 - all CIDs up to 53
- DB2012 - CID50, 51, 52, 53
- DB2010 - CID 49, with DB2012 chip (models K510, W300, W810, Z530)
which doesn't work with the old testpoint method supported in Cruiser+



Installation

1. Run installer `SeTestPointFullUnlocker_v1.02-installer.exe`
2. Follow the installation wizard's instructions



Cable

Cruiser Suite SE TestPoint Full Unlocker requires a new [Cruiser UC20 cable](#).

The Cruiser UC20 cable consists of:

- data cable
- power supply clips
- testpoint needle

Preparation

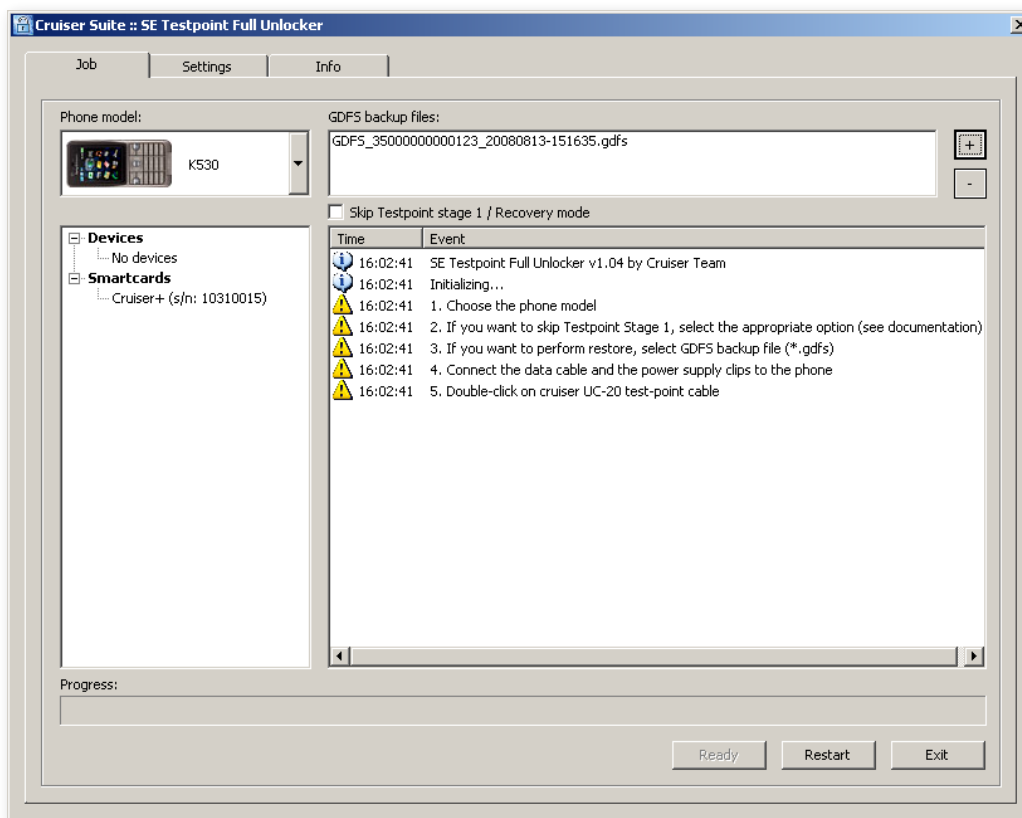
- 1.** Make sure the phone has the desired firmware already, otherwise flash it with your favorite flashing tool.

- 2.** Prepare the phone for the testpoint unlock.
 - remove the phone cover
 - find the appropriate testpoints for Stage 1 and Stage 2 (see pictures in Appendix)
 - make sure that the testpoints are clean and accessible

Note: we recommend to use a binocular microscope for either preparation and testpoint connecting

GDFS reconstruction procedure

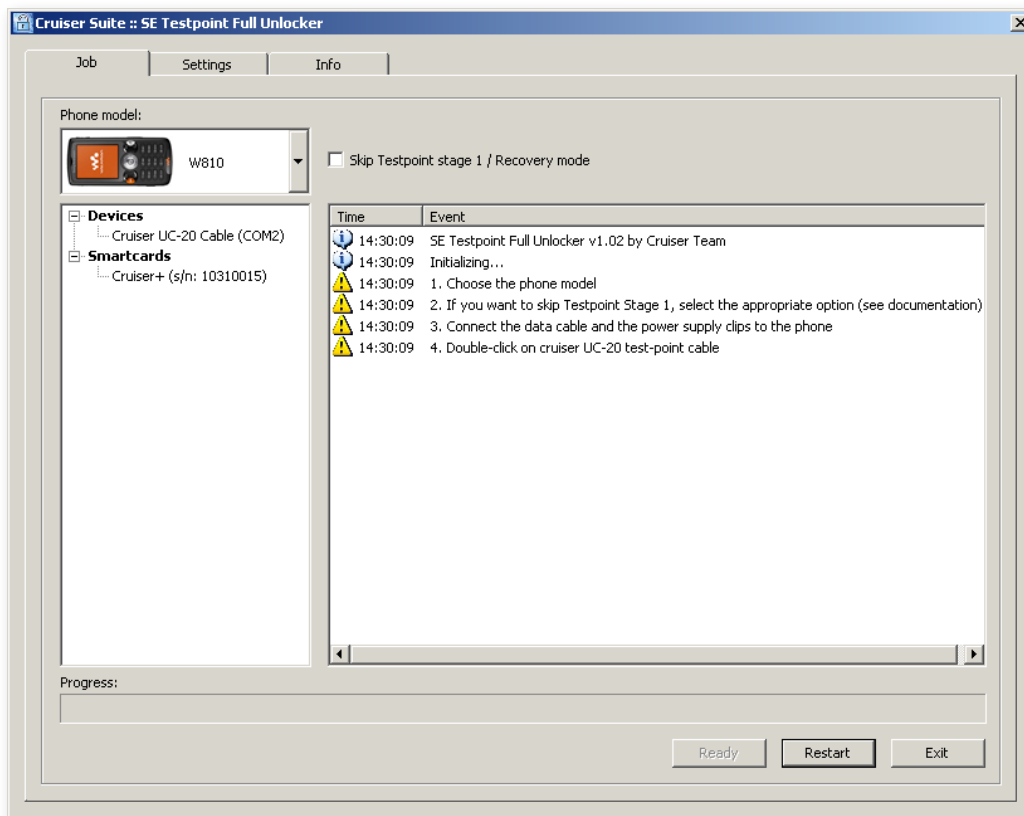
1. Make sure Cruiser+ Dongle is plugged in your computer.
Card ID must end with “-07”.
2. Run `SeTestPointFullUnlocker.exe`
3. Choose the GDFS backup file.



4. Continue with the Unlocking procedure for the appropriate chipset
(see following chapters)

Unlocking procedure of DB2010

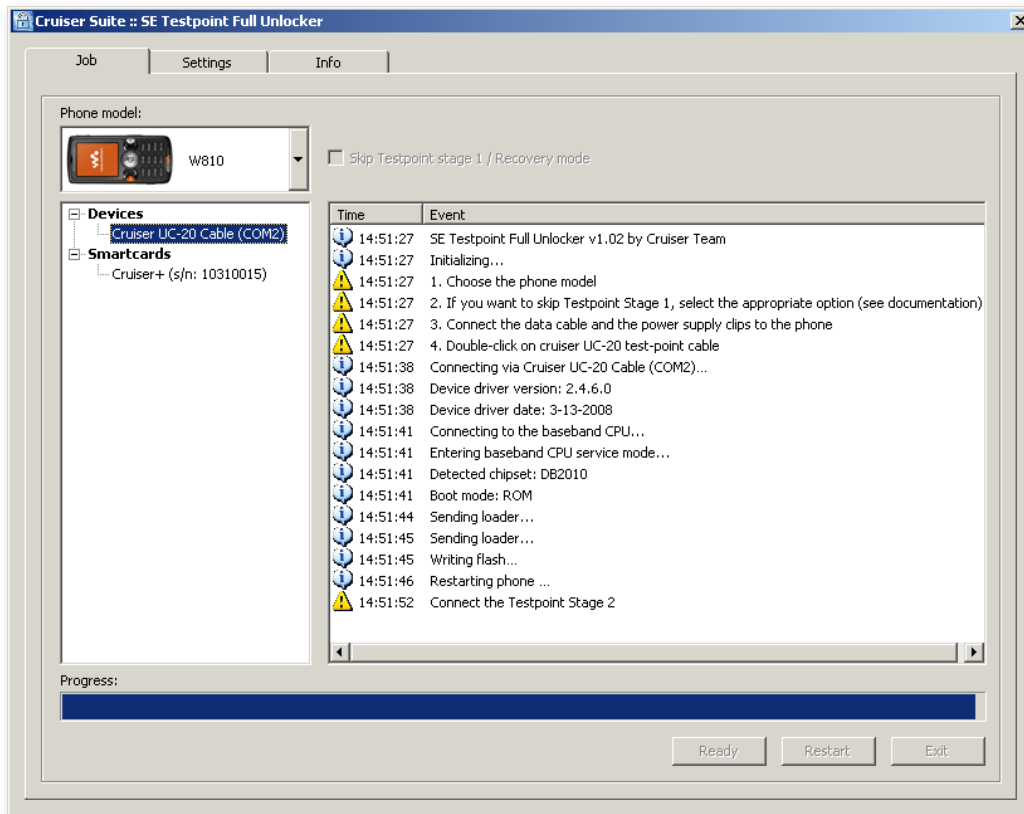
1. Make sure Cruiser+ Dongle is plugged in your computer.
Card ID must end with "-07".
2. Run `SeTestPointFullUnlocker.exe`



3. Choose the phone model.
4. Connect the data cable and power supply clips to the phone.
5. Double-click on the appropriate cruiser UC20 serial cable.

continued 

6. Wait until the program asks you to connect the Testpoint Stage 2.
7. Connect the testpoint needle to Testpoint pin 37 (see Appendix).

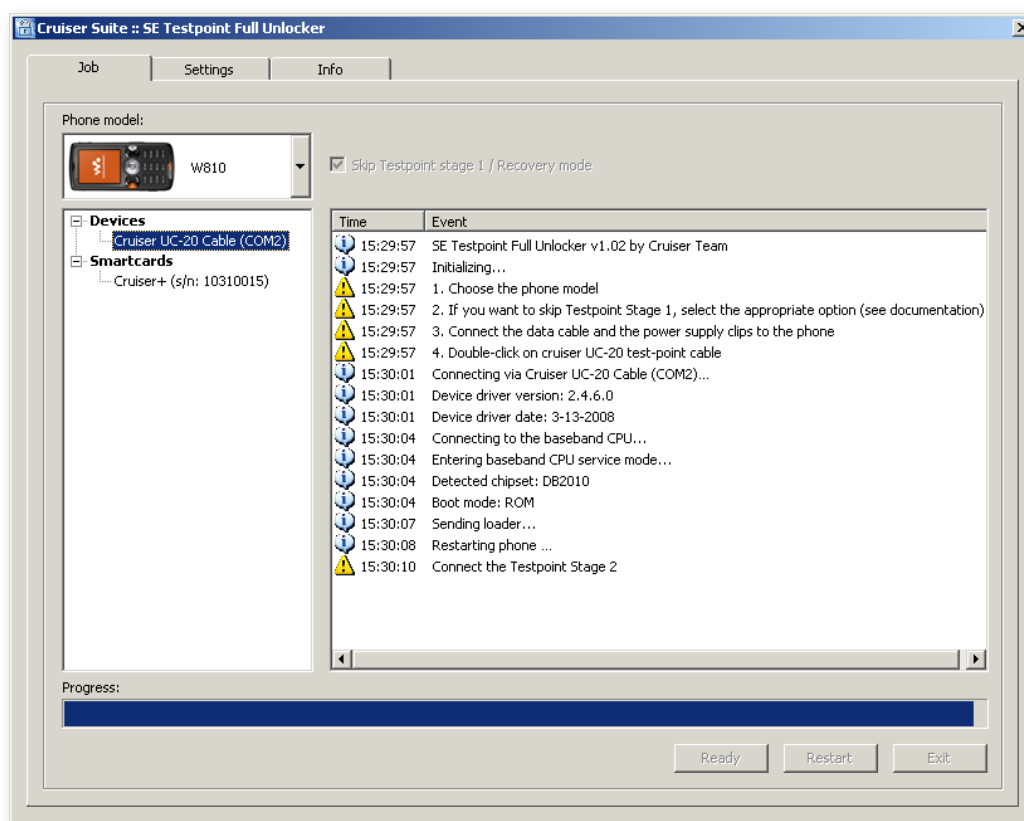


8. Program plays a sound when the testpoint connection is detected.
9. Hold the testpoint until the application informs that the testpoint can be released (it plays the second sound).
10. Wait until program performs all operations.
11. Phone is recovered and unlocked, disconnect the cabling from the phone.

Recovery mode

As far as the EROM is overwritten during the unlock, a broken communication during flashing of EROM might make the phone temporarily unusable. At that time it’s required to proceed the recovery:

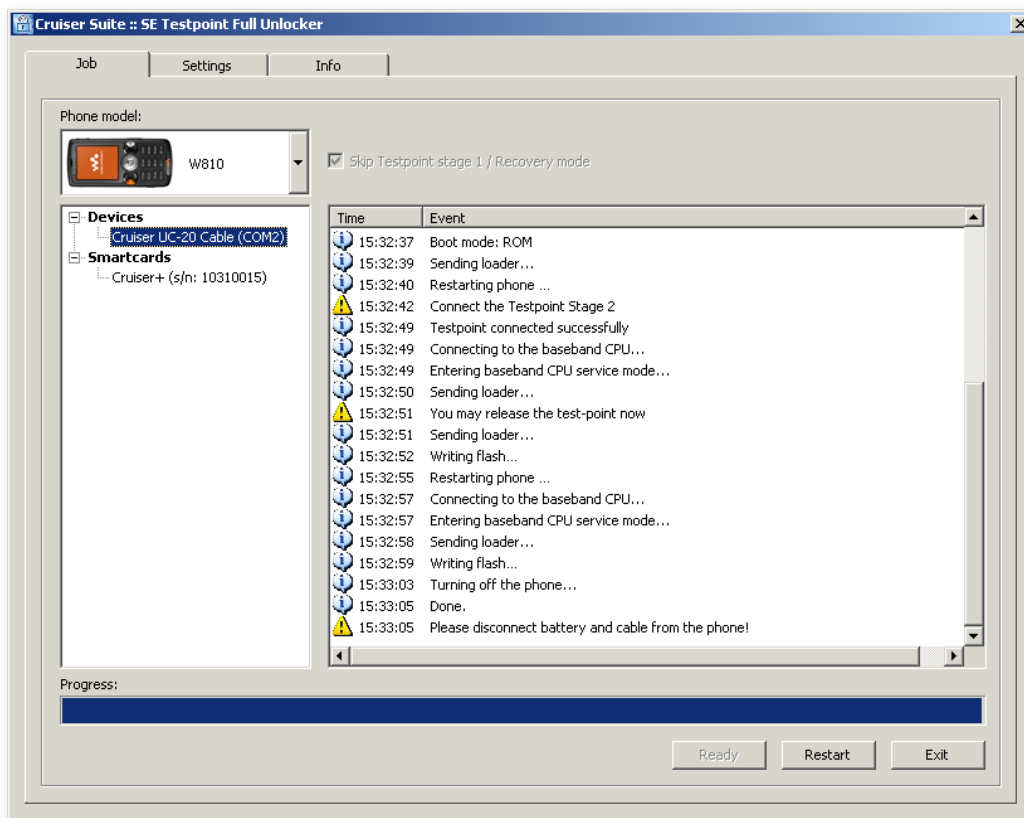
1. Choose the option “Skip testpoint stage 1 / Recovery mode”
2. Double-click on the appropriate cruiser UC20 serial cable.
3. Wait until the program asks you to connect the Testpoint Stage 2.



4. Connect the testpoint needle to Testpoint pin 37 (see Appendix).
5. Program plays a sound when the testpoint connection is detected.

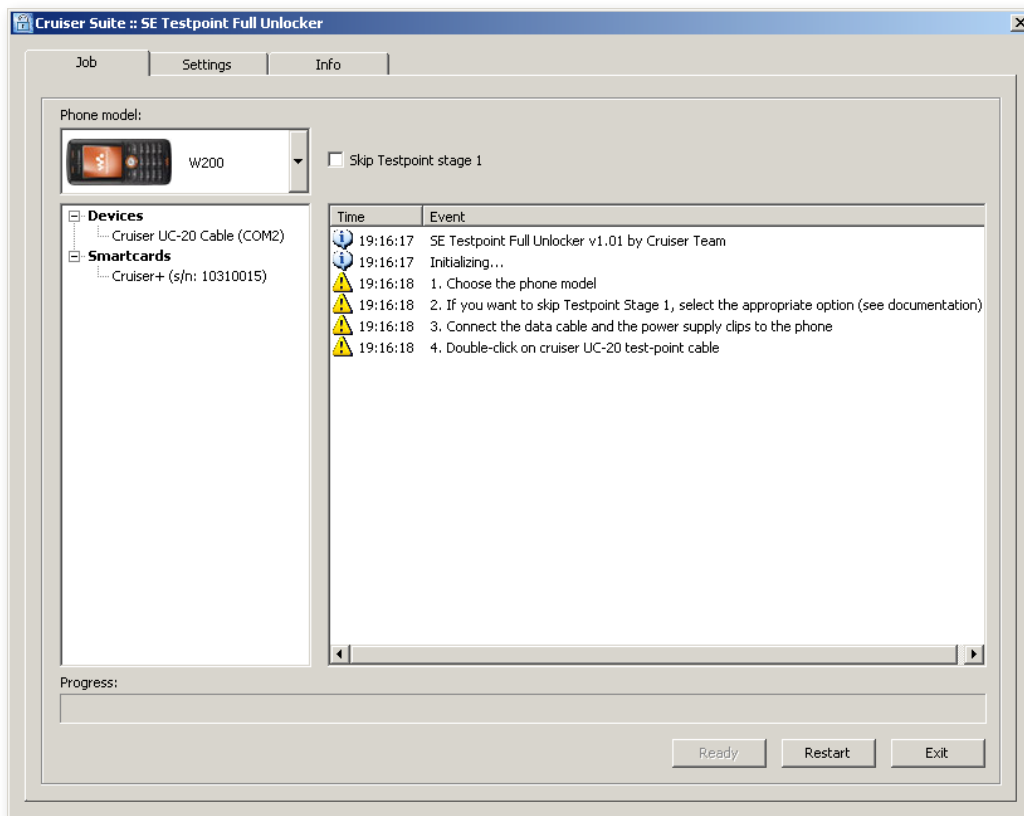
continued ►

6. Hold the testpoint until the application informs that the testpoint can be released (it plays the second sound).
7. Wait until program performs all operations.
8. Phone is recovered and unlocked, disconnect the cabling from the phone.



Unlocking procedure of DB2012

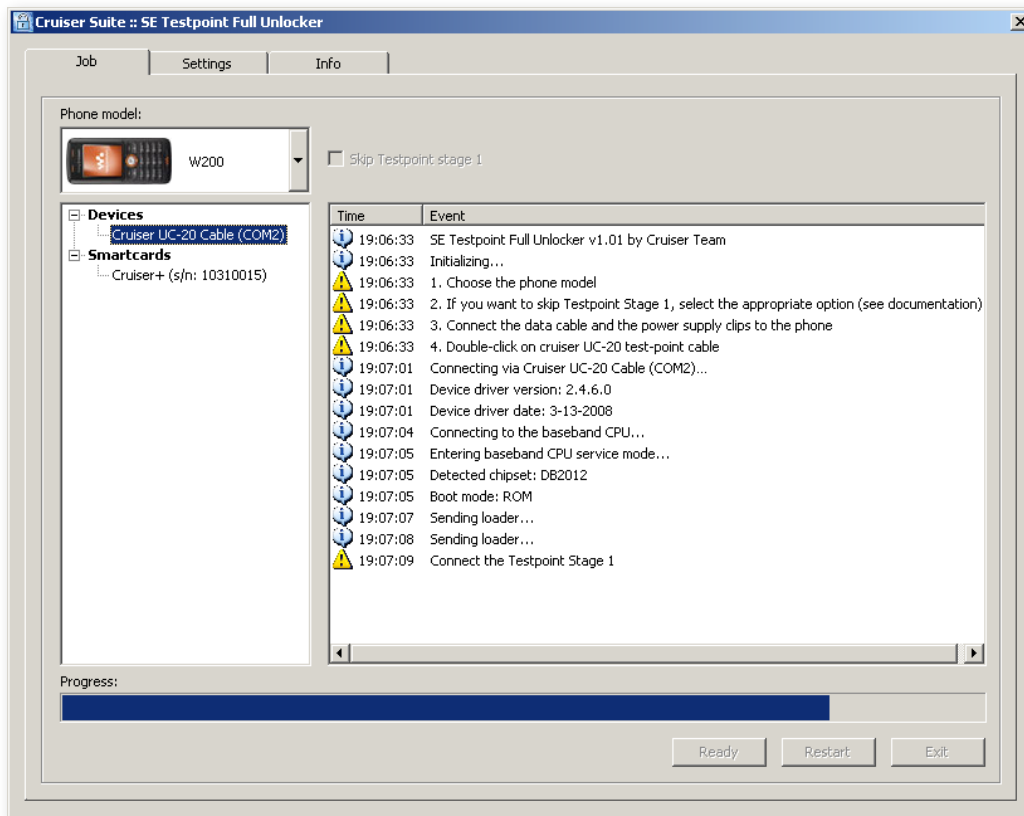
1. Make sure Cruiser+ Dongle is plugged in your computer.
Card ID must end with "-07".
2. Run `SeTestPointFullUnlocker.exe`



3. Choose the phone model.
4. Connect the data cable and power supply clips to the phone.
5. Double-click on the appropriate cruiser UC20 serial cable.

continued ►

6. Wait until the program asks you to connect the Testpoint Stage 1.
7. Connect the testpoint needle to Testpoint pin 27 (see Appendix).

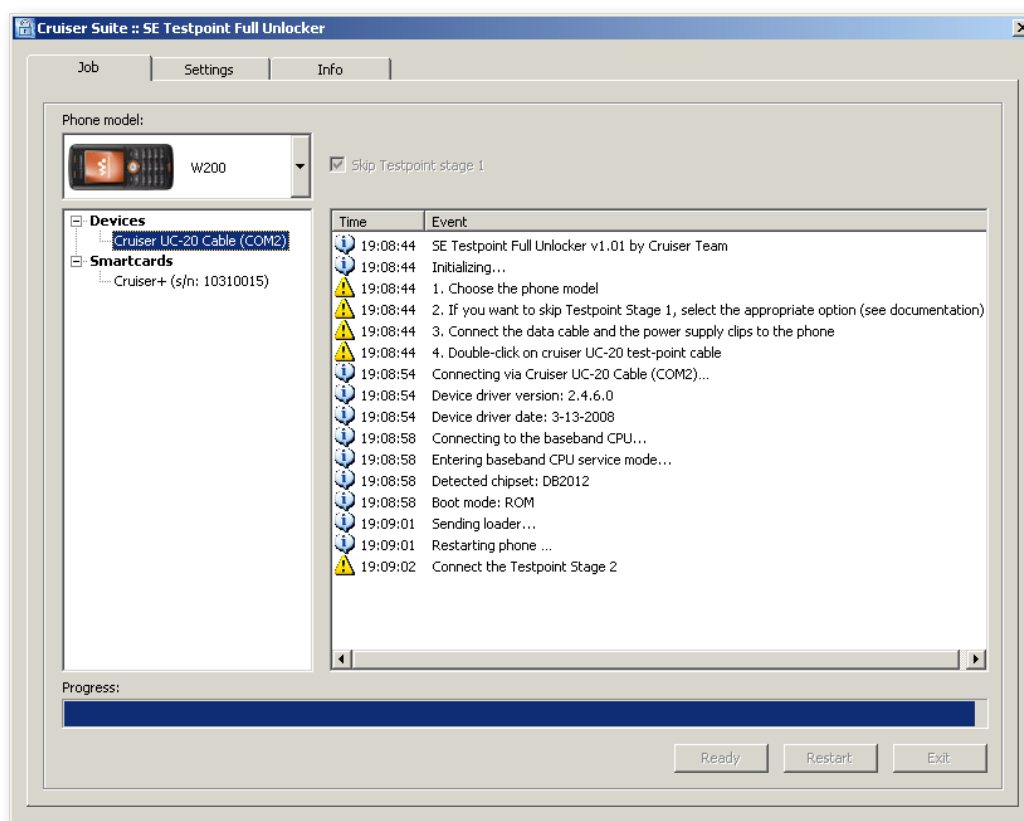


8. Program plays a sound when the testpoint connection is detected.
9. Hold the testpoint until the application informs that the testpoint can be released (it plays the second sound).
10. Wait until program performs all operations.
11. Phone is unlocked, disconnect the cabling from the phone.

Recovery mode

As far as the EROM is overwritten during the unlock, a broken communication during flashing of EROM might make the phone temporarily unusable. At that time it’s required to proceed the recovery:

1. Choose the option “Skip testpoint stage 1”
2. Double-click on the appropriate cruiser UC20 serial cable.
3. Wait until the program asks you to connect the Testpoint Stage 2.

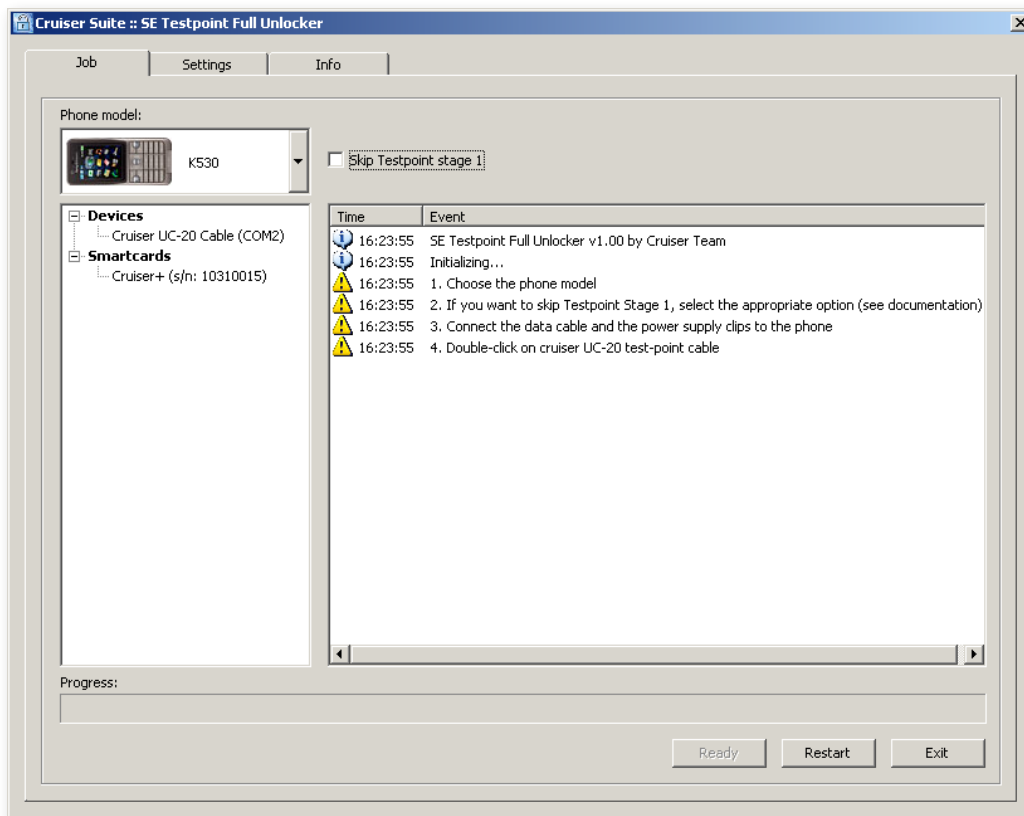


4. Connect the testpoint needle to Testpoint pin 37 (see Appendix).
5. Program plays a sound when the testpoint connection is detected.

- 6.** Hold the testpoint until the application informs that the testpoint can be released (it plays the second sound).
- 7.** Wait until program performs all operations.
- 8.** Phone is recovered and unlocked, disconnect the cabling from the phone.

Unlocking procedure of DB2020

1. Make sure Cruiser+ Dongle is plugged in your computer.
Card ID must end with "-07".
2. Run `SeTestPointFullUnlocker.exe`

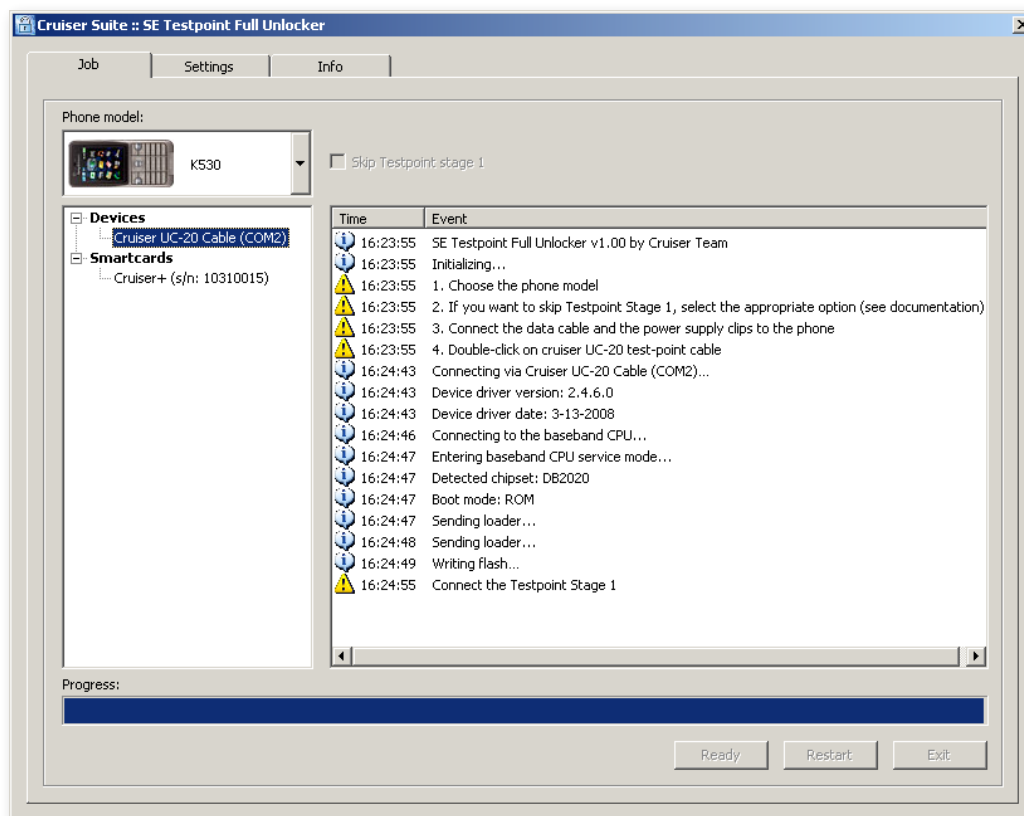


3. Choose the phone model.
4. Connect the data cable and power supply clips to the phone.
5. If you want to skip Testpoint Stage 1, select the appropriate option.
6. Double-click on the appropriate cruiser UC20 serial cable.

continued ►

Stage 1

1. Wait until the program asks you to connect the Testpoint Stage 1.
2. Connect the testpoint needle to Testpoint pin Stage 1 (see Appendix).

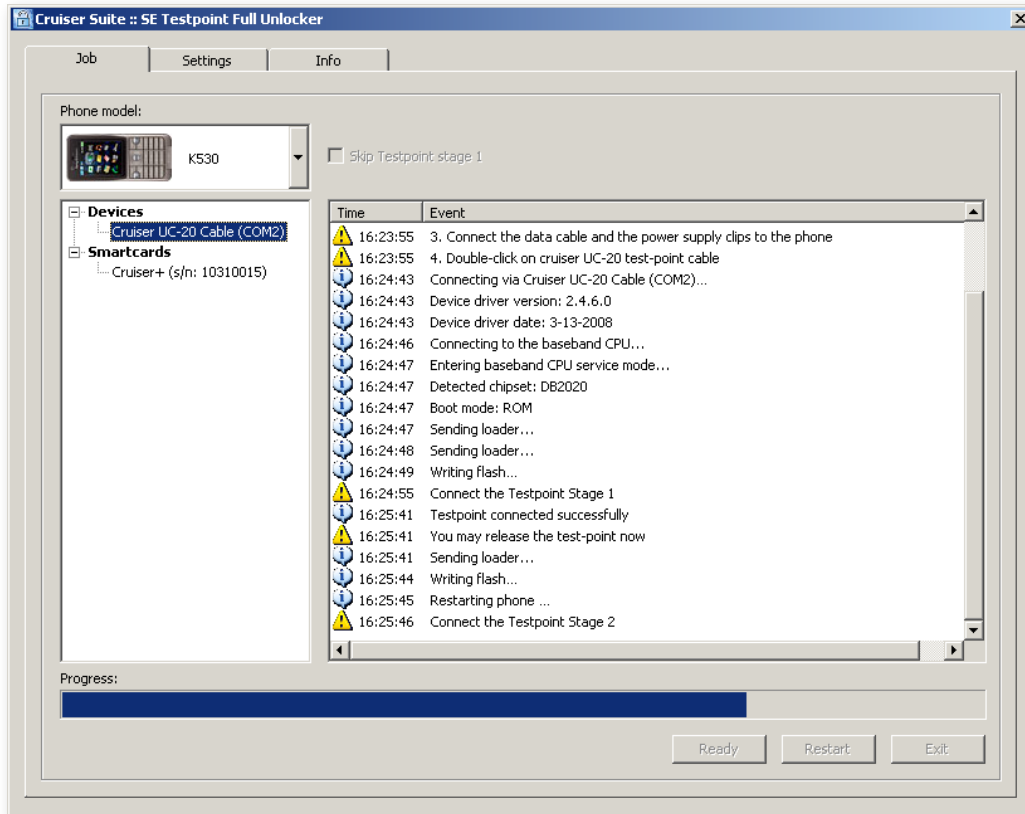


3. Program plays a sound when the testpoint connection is detected.
4. Hold the testpoint until the application informs that the testpoint can be released (it plays the second sound).
5. Wait until program performs operations and continues to Stage 2.

Note: Once the Stage 1 completes correctly, there is no need to repeat it anymore.

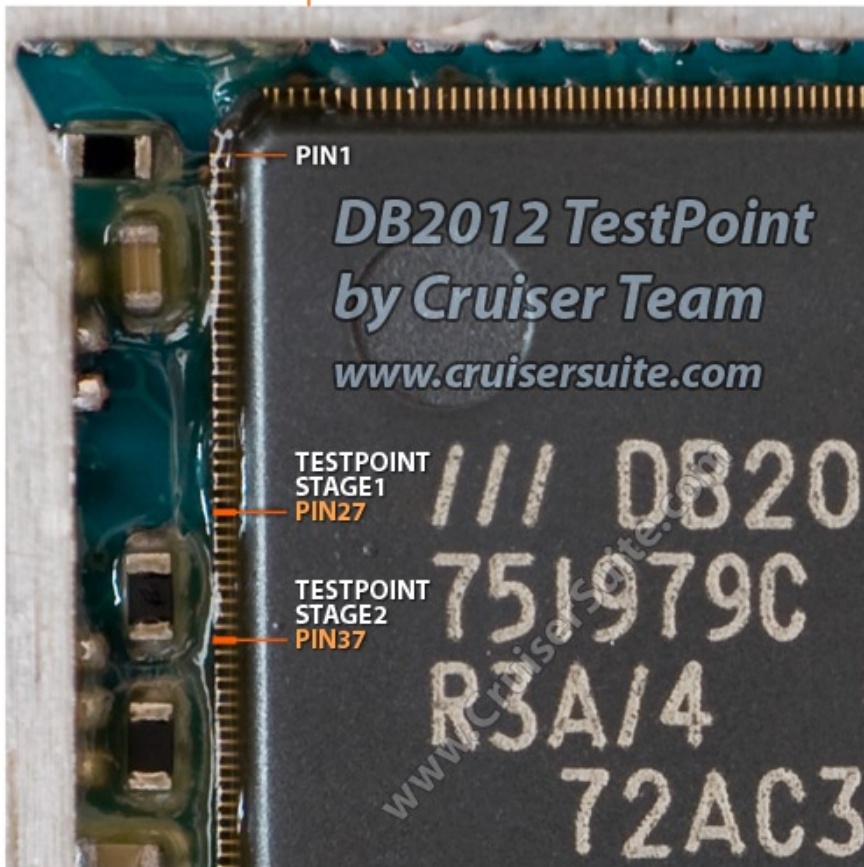
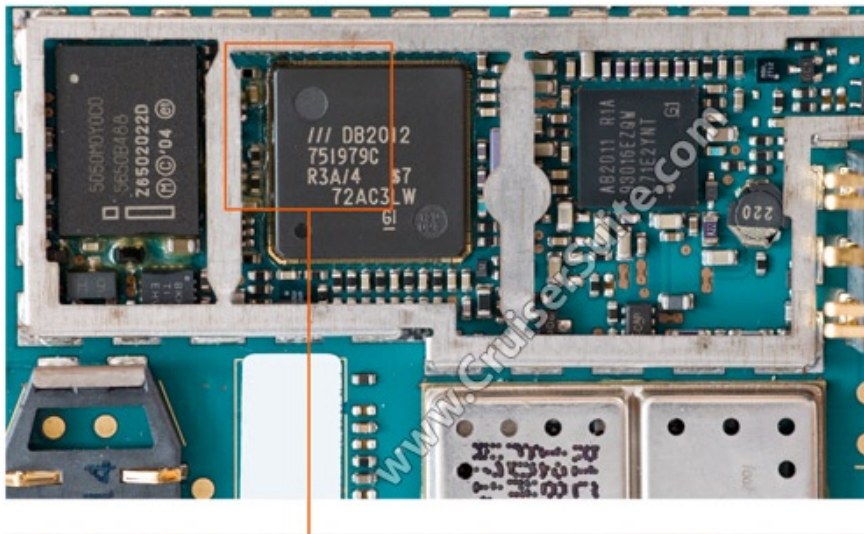
Stage 2

1. Connect the testpoint needle to Testpoint pin Stage 2 (see Appendix).
(The program asks you to do so).



2. Program plays a sound when the testpoint connection is detected.
3. Hold the testpoint for about 4 seconds, until the application informs that the testpoint can be released (it plays the second sound).
4. Wait until program performs operations finishes.
5. Phone has been unlocked, disconnect the cabling from the phone.

Appendix - DB2010, DB2012 Testpoints

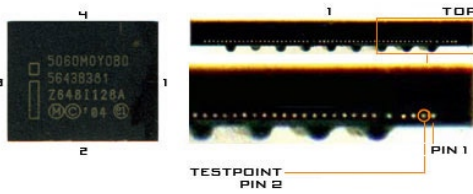


Appendix - DB2020 Testpoints

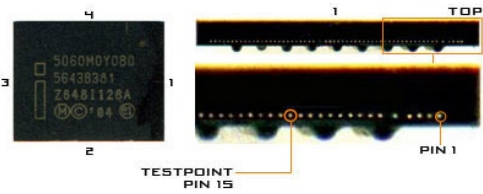
Testpoint for stage 1

Testpoint for stage 2

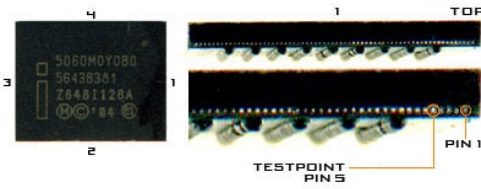
Testpoint for 5060M0Y0B0 variant 1



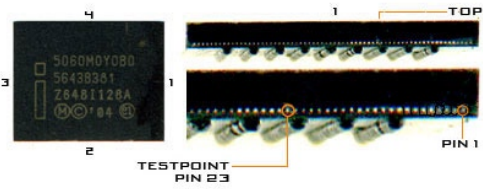
Testpoint for 5060M0Y0B0 variant 1



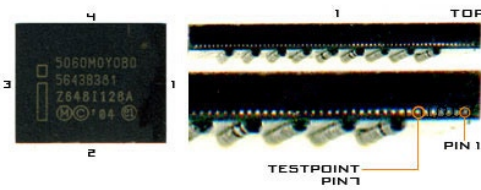
Testpoint for 5060M0Y0B0 variant 2



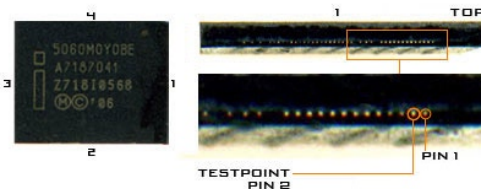
Testpoint for 5060M0Y0B0 variant 2



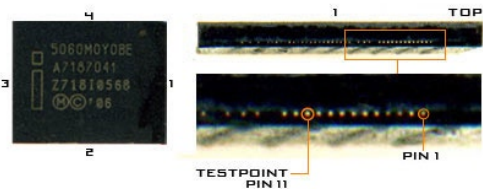
Testpoint for 5060M0Y0B0 variant 3



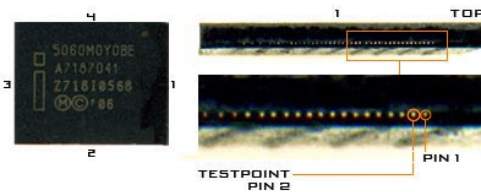
Testpoint for 5060M0Y0BE variant 1



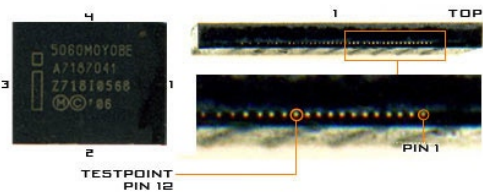
Testpoint for 5060M0Y0BE variant 1



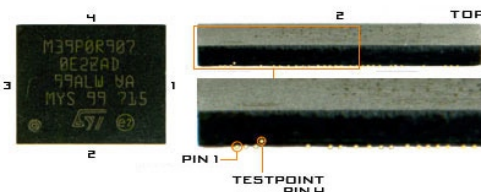
Testpoint for 5060M0Y0BE variant 2



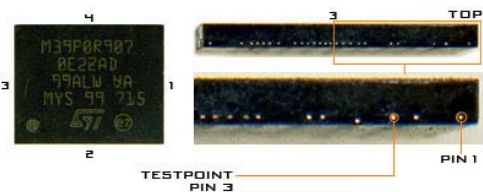
Testpoint for 5060M0Y0BE variant 2



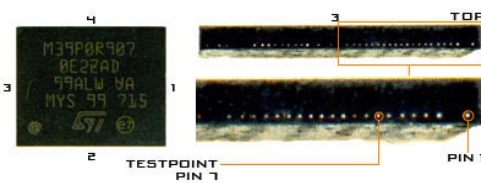
Testpoint for M39P0R907 variant 1



Testpoint for M39P0R907 variant 1



Testpoint for M39P0R907 variant 2



Testpoint for M39P0R907 variant 2

